



KANE-TCAM

Thermal Imaging Camera

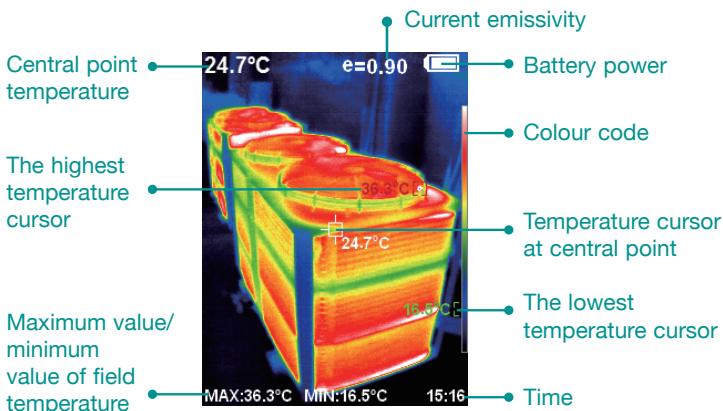
Combines surface temperature measurement & real-time thermal imaging

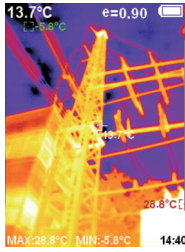
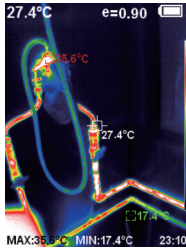
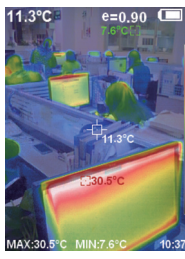
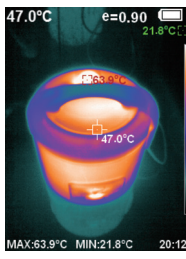
Key Features:

- The large colour display & on-screen cursor
 - Accurately locate temperature hotspots
- 3GB SD Card Data storage
 - Store up to 20,000 images that can be extracted through USB
- Rechargeable battery
 - 2-3 hours use in normal operation
- Four types of surface measurement modes:
 - Coarse surface
 - Semi-matte surface
 - Semi-shiny surface
 - Shiny surface
- Ideal for many industries including:
 - Plumbing & Heating
 - Radiators, underfloor heating, energy auditing or water damage
 - Automotive
 - Heated seats & windows, high resistance in wiring, overheating wiring or components



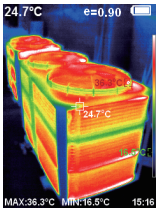
Display Screen 2.8 inch full view TFT display



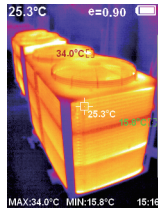


Colour palette:

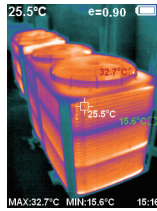
- For additional contrast between high & low temperatures



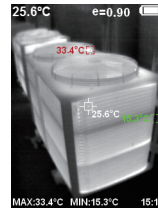
Rainbow



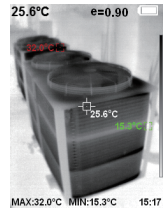
Iron oxide red



Cold colour



White heat



Black heat

Specifications

Model	KANE-TCAM
Display screen	2.8-inch full-view TFT display
Temperature measurement range	-20°C to 300°C (-4°F to 572°F)
Measurement accuracy	±2°C/±2%
Infrared image resolution	220×160
Visible image resolution	35200 pixel
LCD resolution	320×240
Field angle	35°×26°
Shortest focus length	0.15M
Thermal sensitivity	0.07°C
Frame rate of thermal images	9Hz
Focus mode	Fixed
Wavelength coverage	8-14um
Emissivity	Adjustable from 0.01 to 1.00



Uw distributeur
Hitma B.V.

Vragen over handmeters:
www.hitma-handmeters.nl